



iFIX

The innovative PV flat roof installation system
with only three components

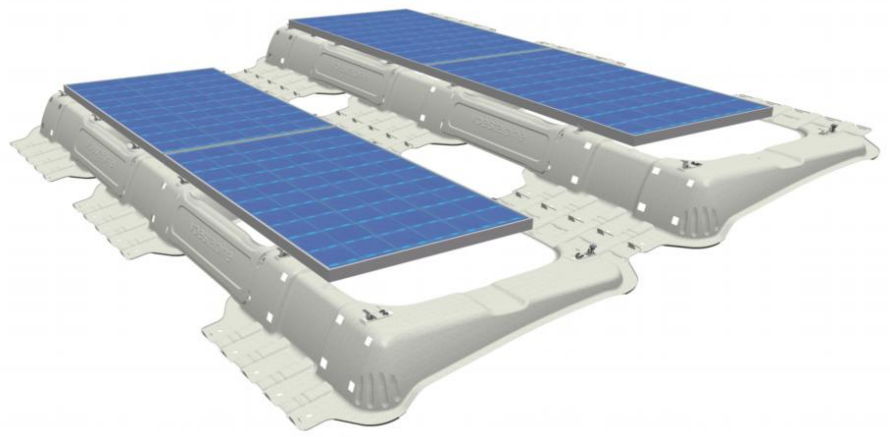
Technical Data Sheet

Version February 15th, 2013

feif008.00

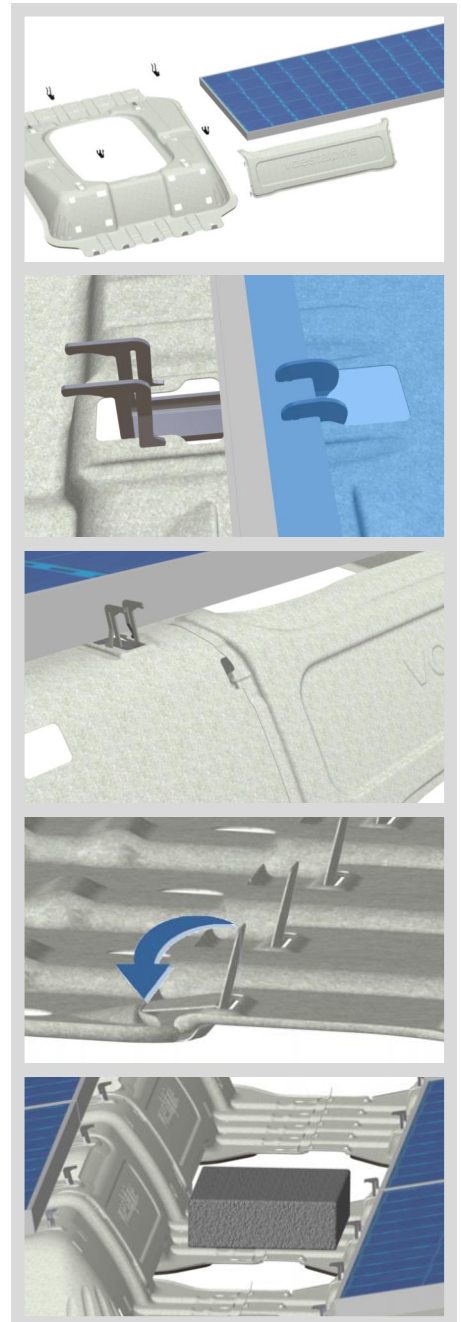
iFIX

Technical Data



Requirements	Roof inclination maximum 5° Permissible roof skins: Bitumen, plastic foil, gravel. No permanent ponding water on the roof. Wind load zones 1 to 3 Snow load up to 5,4 kN/m ² Building height: max. 32 m
Areaload	4,47 kg/m ² inclusive protection mats and clamps, without PV and weighting
Module direction	horizontal
Usable PV standard modules with frame	Frame size: minimum 1.638 x 982 mm, maximum 1.675 x 1.000 mm, Height: 30 up to 51 mm Lower horizontal mounting flange required
Grid dimension in row	PV module length +10 mm (maximum 1.685 mm) To calculate length of row, add 400 mm for end sections.
Grid dimension between rows	1.590 mm at 16° shading angle 1.519 mm at 18° shading angle
Height	maximum 231 mm (without PV module)
Module angle	10°
Shading angle	selectable 16°/18°
Material	Sheet parts: corrosion protected aluminium-zinc-coated steel sheet Lever clamps: stainless steel

Authorized
dealer:



Contact:
voestalpine Polynorm GmbH & Co. KG
Hans Schwenk
phone +49-7171-972-906
fax +49-7171-972-321
hans.schwenk@voestalpine.com
www.voestalpine.com/polynorm